

Освещение, управление и передние крышки

Описание

По вопросам продаж и поддержки обращайтесь:

Алматы (727)345-47-04
Ангарск (3955)60-70-56
Архангельск (8182)63-90-72
Астрахань (8512)99-46-04
Барнаул (3852)73-04-60
Белгород (4722)40-23-64
Благовещенск (4162)22-76-07
Брянск (4832)59-03-52
Владивосток (423)249-28-31
Владикавказ (8672)28-90-48
Владимир (4922)49-43-18
Волгоград (844)278-03-48
Вологда (8172)26-41-59
Воронеж (473)204-51-73
Екатеринбург (343)384-55-89

Иваново (4932)77-34-06
Ижевск (3412)26-03-58
Иркутск (395)279-98-46
Казань (843)206-01-48
Калининград (4012)72-03-81
Калуга (4842)92-23-67
Кемерово (3842)65-04-62
Киров (8332)68-02-04
Коломна (4966)23-41-49
Кострома (4942)77-07-48
Краснодар (861)203-40-90
Красноярск (391)204-63-61
Курск (4712)77-13-04
Курган (3522)50-90-47
Липецк (4742)52-20-81

Магнитогорск (3519)55-03-13
Москва (495)268-04-70
Мурманск (8152)59-64-93
Набережные Челны (8552)20-53-41
Нижний Новгород (831)429-08-12
Новокузнецк (3843)20-46-81
Ноябрьск (3496)41-32-12
Новосибирск (383)227-86-73
Омск (3812)21-46-40
Орел (4862)44-53-42
Оренбург (3532)37-68-04
Пенза (8412)22-31-16
Петрозаводск (8142)55-98-37
Псков (8112)59-10-37
Пермь (342)205-81-47

Ростов-на-Дону (863)308-18-15
Рязань (4912)46-61-64
Самара (846)206-03-16
Санкт-Петербург (812)309-46-40
Саратов (845)249-38-78
Севастополь (8692)22-31-93
Саранск (8342)22-96-24
Симферополь (3652)67-13-56
Смоленск (4812)29-41-54
Сочи (862)225-72-31
Ставрополь (8652)20-65-13
Сургут (3462)77-98-35
Сыктывкар (8212)25-95-17
Тамбов (4752)50-40-97
Тверь (4822)63-31-35

Тольятти (8482)63-91-07
Томск (3822)98-41-53
Тула (4872)33-79-87
Тюмень (3452)66-21-18
Ульяновск (8422)24-23-59
Улан-Удэ (3012)59-97-51
Уфа (347)229-48-12
Хабаровск (4212)92-98-04
Чебоксары (8352)28-53-07
Челябинск (351)202-03-61
Череповец (8202)49-02-64
Чита (3022)38-34-83
Якутск (4112)23-90-97
Ярославль (4852)69-52-93

Россия +7(495)268-04-70

Казахстан +7(727)345-47-04

Беларусь +(375)257-127-884

Узбекистан +998(71)205-18-59

Киргизия +996(312)96-26-47

эл.почта: deg@nt-rt.ru || сайт: <https://dino-lite.nt-rt.ru/>

BL-CDW

By easily configuring with Dino-Lite, the BL-CDW transmitted-light illuminator provides alternative ways to enhance the contrast of specimen with bright field and dark field modes.

The bright field mode of BL-CDW, which produces a collimated beam of light with no adjustment required, largely reduces the scattered light and therefore may reveal more detail comparing to a diffused backlight.

By switching to dark field mode with a simple touch, the BL-CDW generates a hollow cone of high-intensity light to form dark field illumination. The oblique illumination may reveal more surface details that are not well imaged under bright field illumination.

Note:The BL-CDW is suggested to be used with Dino-Lite at magnification higher than 100x.



Model	BL-CDW Backlight Illuminator
Unit Weight	approx. 178 g = 0.4 lb. 6.27 oz.
Unit Dimension	51 mm (H) x 54.3 mm (Dia)
Package Dimensions	16 cm (L) x 16 cm (W) x 6 cm (H)

BL-ZW2

Equipped with an adjustable and also a removable polarizer, BL-ZW2 backlight offers parallel to cross-polarization and can transmit plain light by removing the polarizer. BL-ZW2 is designed to image birefringent properties for distinguishing anisotropic from isotropic materials, detecting defects, or examining internal stresses, making it suitable for industry, petrography, and biology applications.



Removable polarizer for plain backlight illumination.

Adjustable Polarizer

Changing polarizer orientation of BL-ZW2 allows parallel and cross-polarization configurations when using a Dino-Lite polarizing microscope.

Removable Polarizer

Removing the polarizer for applications requiring plain light.

Model	BL-ZW2 Backlight Pad
Polarizer	Yes (removable)
Unit Weight	approx. 315 g = 11.2 oz.
Unit Dimension	10 cm (L) x 9 cm (W) x 2 cm (H)

N3C-A (Coaxial Light Cap)

Answering the need of coaxial illumination, the N3C-A is designed to form coaxial front light simply by replacing the front cap of Dino-Lite Edge models. The coaxial front light, formed by mirroring the light of Dino-Lite with a beam splitter, may help to highlight scratches and dents from reflective surface, or to suppress shadowing when looking at object behind a deep hole. The compact and innovative design makes it an indispensable accessory for many critical inspection applications.



Model	N3C-A Coaxial Light Cap
Compatible Dino-Lite Models	Dino-Lite Edge LWD models (TL, ZTL)
Note	The working distance of Dino-Lite attached with N3C-A will be reduced by 5mm. Some magnification range of standard models could thus be obscured from using.
Unit Dimension	18.5mm (H) x 30.3mm (D)
Materials	Polycarbonate
Unit Weight	approx. 6 g

N3C-R (Ring Light Cap)

In most macro observation, a ring light may help to reveal more details by generating shadow-less illumination. Working seamlessly with the Dino-Lite Edge series, the N3C-R front cap is a unique and the simplest solution designed to provide ring illumination for a microscope. The 6.5 cm (2.5 inch) diameter N3C-R fully utilizes the Dino-Lite's built-in LEDs by redirecting it to form a focused, diffused, and uniform ring-light. For polarizer model such as AM4115ZT, the polarizer can still be used for suppressing the unwanted glare or reflection when using with N3C-R. Without the clutter of mounting and powering an external ring light, thus no heat and noticeable weight been added, the clip-on N3C-R economically provides alternative illumination and adds more flexibility to Dino-Lite's applications.

Note: The N3C-R has best working distance in the range of about 2 to 15 cm. It may not be suitable for short working distance operation, and is not compatible with high magnification models such as AM4515T5 or AM4515T8.



Model	N3C-R Ring Light Cap
Compatible Dino-Lite Models	Dino-Lite Edge LWD models (TL, ZTL)
Unit Dimension	15.5 mm (H) x 65 mm (D)
Materials	Polycarbonate with sputtered aluminum coated
Unit Weight	approx. 8 g

SL-ZW1

The SL-ZW1 is not your ordinary articulate USB powered light. The SL-ZW1 is a polarized USB powered LED light that can be used with polarized Dino-Lite models. With a simple rotation, you can adjust the amount of polarized illumination required for the right image. To take advantage of the polarizing light, the accessory is best to be used with Dino-Lite models that have the polarization ability such as the AM413ZT, AM413ZTL or the AD413ZT.

This accessory is great for applications such as jewelry inspection, and also great for conditions where the Dino-Lite is too far from the object but still requires polarized illumination. If the Dino-lite does not have the polarization feature, you can still use it as additional external lighting or as a side light to enhance the view of surface topography! This desirable tool is a nifty accessory that is a great addition to the Dino-Lite digital handheld microscope family.



Adjustable polarization

Useful for suppressing glare from reflective materials, such as metals, plastics, or glass, and applicable in dermatology for observing the sub dermal layer of skin.



Microscope side light with polarizer

The flexible arm can be twisted and bent to the desired position for optimal lighting. It is best paired with models with polarization capabilities.

Model	SL-ZW1 Side Light with Polarizer
Polarizer	Yes
Unit Weight	56g
Unit Dimension	40cm (L) x 1.6cm (W)
Package Dimensions	16cm(L) x 16cm(W) x 6cm (H)

Dino-Lite Dino-Lite

MSBL-CDW



Brightfield/Darkfield Backlight Stage

The BL-CDW backlight stage features bright field and dark field illumination for use with Dino-Lite handheld microscopes.

Under Bright Field Mode, the complete form and structure of a specimen is vividly presented as lights propagate in parallel, largely improving the image sharpness slide observation in bright field.

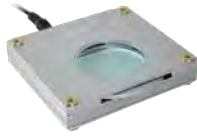
Under Dark Field, its contrast of unstrained specimen is strongly enhanced and the profile of specimen can be sharply seen. It is suitable for fixed specimen and even vital ones such as flagellum, the pseudopod movement, spirochete and more. Using the BL-CDW it is possible to get informative results with the technology through live analysis.

Note: The BL-CDW should be used with Dino-Lite with the magnification set above 100x.

Dimensions	4.7cm (L) x 3.8cm (W) x 6.3cm (H)	Package Includes	Holster
Weight	70g (2.5 oz)	Warranty Period	1 year
Body Material	Metal	Manufactured in	China
Compatible with	All Dino-Lite Handheld Microscopes	Regulatory Approval	ROHS

Dino-Lite Dino-Lite

BL-ZW1



Polarized Backlight Stage

Backlight stage polarizer designed for use with Dino-Lite models with built on polarizers (AM4113ZT, AM4115ZT, AM7115ZT, etc). This easy to use backlight stage with polarizing ability comes with an attachable swing arm target holder for specific placement of objects. The BLZW1 is a sturdy and attractive backlight stage that is powered through a USB cord or AC Adapter. Adjustment of the polarizer is simply performed by sliding the wheel adjustment located on the front of the stage. Researchers may find that the BL-ZW1 could be an economic substitute to the traditional polarizer microscope. The BL-ZW1 backlight stage combined with a polarizing model has the potential to meet many applications covered by polarizing microscopes.

- Diameter of illumination: 4.5cm

Dimensions	4.7cm (L) x 3.8cm (W) x 6.3cm (H)	Package Includes	Holster
Weight	70g (2.5 oz)	Warranty Period	1 year
Body Material	Metal	Manufactured in	China
Compatible with	All Dino-Lite Handheld Microscopes	Regulatory Approval	ROHS

Dino-Lite Dino-Lite

BL-ZW2



Removable Polarizer Backlight Stage

Equipped with an adjustable and also a removable polarizer, BL-ZW2 backlight offers parallel to cross-polarization and can transmit plain light by removing the polarizer.

BL-ZW2 is designed to image birefringent properties for distinguishing anisotropic from isotropic materials, detecting defects, or examining internal stresses, making it suitable for industry, petrography, and biology applications.

Dimensions	4.7cm (L) x 3.8cm (W) x 6.3cm (H)	Package Includes	Holster
Weight	70g (2.5 oz)	Warranty Period	1 year
Body Material	Metal	Manufactured in	China
Compatible with	All Dino-Lite Handheld Microscopes	Regulatory Approval	ROHS

Dino-Lite Dino-Lite and Dunwell

MSBL-ZW2R



Removable Polarizer Backlight Stage (with attachment adapter)

Backlight stage polarizer (+ attachment adapter for MS35B/RK-06A/RK-10A) designed for use with Dino-Lite polarizing model microscopes (AM4113ZT, AM5212NZZ, AF7915MZZ or AF4115ZT etc). The "R" variant includes an attachment adapter to connect the backlight stage easily to RK-10A, MS35B and RK-06A stands.

Equipped with an adjustable and also a removable polarizer, BL-ZW2 backlight offers parallel to cross-polarization and can transmit plain light by removing the polarizer.
BL-ZW2 is designed to image birefringent properties for distinguishing anisotropic from isotropic materials, detecting defects, or examining internal stresses, making it suitable for industry, petrography, and biology applications.

Dimensions	4.7cm (L) x 3.8cm (W) x 6.3cm (H)	Package Includes	Holster
Weight	70g (2.5 oz)	Warranty Period	1 year
Body Material	Metal	Manufactured in	China
Compatible with	All Dino-Lite Handheld Microscopes	Regulatory Approval	ROHS

Dino-Lite Dino-Lite

MSBL-ZW1R



Portable Back Light and Clip (with attachment adapter)

Backlight stage polarizer (+ attachment adapter for MS35B/RK-06A/RK-10A) designed for use with Dino-Lite polarizing model microscopes (AM4113ZT, AM5212NZT, AM7915MZT or AF4115ZT etc). The "R" variant includes an attachment adapter to connect the backlight stage easily to RK-10A, MS35B and RK-06A stands. This easy to use backlight stage with polarizing ability comes with an attachable swing arm target holder for specific placement of objects. The BL-ZW1 is a sturdy and attractive backlight stage that is powered through a USB cord or AC Adapter. Adjustment of the polarizer is simply performed by sliding the wheel adjustment located on the front of the stage. Researchers may find that the BL-ZW1 could be an economic substitute to the traditional polarizer microscope. The BL-ZW1 backlight stage combined with a polarizing model has the potential to meet many applications covered by polarizer microscope.

- Diameter of illumination: 4.5cm

Dimensions	4.7cm (L) x 3.8cm (W) x 6.3cm (H)	Package Includes	Holster
Weight	70g (2.5 oz)	Warranty Period	1 year
Body Material	Metal	Manufactured in	China
Compatible with	All Dino-Lite Handheld Microscopes	Regulatory Approval	ROHS

Dino-Lite Dunwell for Dino-Lite

MSAK826W



Jewelry Photobox with Lights

Photo box for premium image capture when lighting and color matters and is designed for image capture for numismatics and jewelry. Includes an 8" light tube. This stand allows you to place the Dino-Lite outside of the box and view from the open slot.

The MSAK826W features a sloped backdrop. This backdrop clips in and can be flipped to showcase the white background, dark background, or be removed entirely. Powered by an included AC Adapter, this photo box helps eliminate outside light pollution and other factors that could disturb your photo imaging.

MSAK826W Light and Power Spec

- Color Temp : 5400K
- Lamp Life : 8000H
- Voltage : 120V
- Brightness : 3000LUX
- User Manual: Image File (.jpg)

Dimensions	4.7cm (L) x 3.8cm (W) x 6.3cm (H)	Package Includes	Holster
Weight	70g (2.5 oz)	Warranty Period	1 year
Body Material	Metal	Manufactured in	China
Compatible with	All Dino-Lite Handheld Microscopes	Regulatory Approval	ROHS

Dino-Lite Dunwell for Dino-Lite

MSAK827



USB Powered LED Backlight

MSAK827 is a portable USB Powered LED Backlight stage designed to fit on most Dino-Lite stands. Simply connect the MSAK827 to a USB port on a computer or AC adapter (not included) and the stage lights up automatically. Constructed from lightweight acrylic, the MSAK827 is a simple solution for portable high-contrast or transmitted light. Lowering the power of the Dino-Lite microscope could help provide optimal images. See the guide linked below for more tips and information.

-

MSAK827 Quick Start Guide

Dimensions	4.7cm (L) x 3.8cm (W) x 6.3cm (H)	Package Includes	Holster
Weight	70g (2.5 oz)	Warranty Period	1 year
Body Material	Metal	Manufactured in	China
Compatible with	All Dino-Lite Handheld Microscopes	Regulatory Approval	ROHS

Dino-Lite Dino-Lite Edge

N3C-A



Axial Light Cap

The N3C-A Axial Light cap is an optional accessory for use with Dino-Lite Edge Series microscope cameras with Longer Working distance. Replace the front cap of a Dino-Lite Edge Series microscope and the coaxial front light is formed by mirroring the light of Dino-Lite with a beam splitter, this helps to highlight scratches and dents on reflective surfaces or to avoid shadow obscured by thick surroundings of deep holes. The compact and interchangeable N3C-A is an ideal supplement for tackling with inspection challenges.

Note: The working distance of Dino-Lite attached with N3C-A will be reduced by 5mm. Some magnification range of standard working distance models could thus be obscured from using. Standard working distance models may function with N3C-A at 225x or less than 50x.

Dimensions	4.7cm (L) x 3.8cm (W) x 6.3cm (H)	Package Includes	Holster
Weight	70g (2.5 oz)	Warranty Period	1 year
Body Material	Metal	Manufactured in	China
Compatible with	All Dino-Lite Handheld Microscopes	Regulatory Approval	ROHS

Dino-Lite Dunwell for Dino-Lite

MSAA502



Ambient Light Blocking Adapter

Conical adapter for direct compatibility with Dino-Lite microscope cameras, useful for eliminating ambient light or providing an enhanced field of view at optimal distances for various applications. When using AM/AD40XX series provides approximately 10x magnification.

Dimensions	4.7cm (L) x 3.8cm (W) x 6.3cm (H)	Package Includes	Holster
Weight	70g (2.5 oz)	Warranty Period	1 year
Body Material	Metal	Manufactured in	China
Compatible with	All Dino-Lite Handheld Microscopes	Regulatory Approval	ROHS

Dino-Lite Dunwell for Dino-Lite

MSAK812



Flexible non-polarized LED attachment

MSAK812 INCLUDES 2 ARTICULATING GOOSENECK LED WITH COLOR TEMPERATURE OF 5200K

This simple attachment accessory is able to clamp to a variety of bases including the RK-06A, RK-06FA, RK-06AE, MS35B, and RK-10A. The MSAK812 can firmly secure two LED lights for aided viewing. Product comes with a USB hub that has 2 ports which can be used for the included 2 LED lights and more.

Dimensions	4.7cm (L) x 3.8cm (W) x 6.3cm (H)	Package Includes	Holster
Weight	70g (2.5 oz)	Warranty Period	1 year
Body Material	Metal	Manufactured in	China
Compatible with	All Dino-Lite Handheld Microscopes	Regulatory Approval	ROHS

Dino-Lite Dunwell for Dino-Lite

MSAK813



Flexible Adjustable Power LED attachment

Key Features	MSAK813 Specs
<ul style="list-style-type: none">Dual 3W 6500K LED gooseneck illuminatorProvides daylight-balanced lightTwo 22" gooseneck lights100-240VAC 50/60Hz power adapter	<ul style="list-style-type: none">LED Power: 2 x 3WLED Color Temperature: 6500KColor Rendering Index: ~70%Gooseneck Length: 18.1" (460mm)Power Adapter Input: 100-240VAC 50/60HzPower Adapter Output: 5VDC, 2A

The MSAK813 advanced supplemental dual articulating spotlight can be used with the RK-10A, MS35B, MS36B, MS37B stands for white light with brightness controls. These very bright dual LED use flex arms that can be placed in any desired position and has a dimmer for 0-10 brightness control. The MSAK813 requires a 110V outlet for power. 7W Power. LED 3W each. 54" Power cord.
*RK-10A Not Included

Dimensions	4.7cm (L) x 3.8cm (W) x 6.3cm (H)	Package Includes	Holster
Weight	70g (2.5 oz)	Warranty Period	1 year
Body Material	Metal	Manufactured in	China
Compatible with	All Dino-Lite Handheld Microscopes	Regulatory Approval	ROHS

Dino-Lite Dino-Lite

SL-ZW1



Flexible Polarized USB LED Light

The SL-ZW1 is not your ordinary articulating USB powered light. The SL-ZW1 is a polarized USB powered LED light that can be used with polarized Dino-Lite models. With a simple rotation, you can adjust the amount of polarized illumination required for the right image. To take advantage of the polarizing light, the accessory is best to be used with Dino-Lite models that have the polarization ability such as the AM4113ZT, AF4915ZT or the AF7115MZT.

This accessory is great for applications such as jewelry inspection, and also great for conditions where the Dino-Lite is too far from the object but still requires polarized illumination. If the Dino-lite does not have the polarization feature, you can still use it as additional external lighting or as a side light to enhance the view of surface topography.

Dimensions	4.7cm (L) x 3.8cm (W) x 6.3cm (H)	Package Includes	Holster
Weight	70g (2.5 oz)	Warranty Period	1 year
Body Material	Metal	Manufactured in	China
Compatible with	All Dino-Lite Handheld Microscopes	Regulatory Approval	ROHS

PH-DESKSET



The Photonic Desk-set is composed of the LED Hi-Power Spot (2 pieces), 2 spot holders (flexible arms) and 2 base plates.

The Hi-Power Spot must be attached to the included Spot holder. This Spot holder is then mounted onto the round Base plate. With this set you can create two individual Hi-power spots with flexible arms. As it is mounted on the baseplate, it can be placed anywhere around the sample creating total flexibility.

The brightness can be controlled by the compact control unit. Furthermore you can switch on/off the 2-arms individually.

* All other Photonic items are also available through Dino-Lite Europe.

ADDITIONAL INFO

DETAILS	
Accessory range:	Light and control
Price range:	€450,00 - €550,00
ESD-Safe:	Yes
Dimensions:	55cm long, each arm
Weight:	125 g
Compatible with:	All Dino-Lite models, except high magnification models
Package contents:	Hi-Power Spot arm (2x), Spot holders (2x), Base plate (2x), Controller unit, power supply with EU & UK plug ESD Safe add-ons not included
Warranty:	2 year European warranty

PH-F1 SET



Fibre-optic lighting systems consist of a light source and a fibre-optic light guide. By using fibre optics the sample is not effected by any warmth at all.

The Photonic F1-set is composed of the F1 LED cold light source and the fiberoptic light guide with a double arm gooseneck. The sturdy metal housing of the F1 is ESD safe and has a control knob to adjust the brightness of the illumination. The fiberoptic light guide with the double arm gooseneck can be easily adjusted to provide the best angle of illumination to your sample.

* All other Photonic items are also available through Dino-Lite Europe.

ADDITIONAL INFO

DETAILS	
Accessory range:	Light and control
Price range:	€550,00 - €650,00
ESD-Safe:	Yes
Dimensions:	96x110x175mm (unit) 55cm (gooseneck)
Weight:	2500 g (unit) / 550 g (gooseneck)
Compatible with:	All Dino-Lite models, except high magnification models
Package contents:	F1 Cold light source with power supply with EU & UK plug, double arm gooseneck ESD Safe add-ons not included
Warranty:	2 year European warranty

PH-HPS SET



The Photonic HPS-set is composed of the LED Hi-Power Spot 2-arm and the MS35/36B(E) adapters.

This spot is used for direct attachment to microscope stands, like the Dino-Lite MS35/36B(E) stands. As it is mounted on the stand, it is perfect for use in small spaces. The brightness can be controlled by the compact control unit. Furthermore you can switch on/off the 2-arms individually. The flexible arms can be easily adjusted to provide the best angle of illumination to your sample.

* All other Photonic items are also available through Dino-Lite Europe

ADDITIONAL INFO

DETAILS	
Accessory range:	Light and control
Price range:	€450,00 - €550,00
ESD-Safe:	Yes
Dimensions:	55cm long, each arm
Weight:	650 g
Compatible with:	All Dino-Lite models, except high magnification models
Package contents:	Hi-Power Spot 2-arms, Controller unit, power supply with EU & UK plug, MS35/36B(E) adapter ESD Safe add-ons not included
Warranty:	2 year European warranty

FOOT PEDAL SW-F1



The SW-F1 allows you to take a picture with a simple step from your foot using the Dino-Lite or Dino-Eye digital microscopy solutions. The foot pedal is only compatible with DinoCapture 2.0 for the PC and DinoXcope for Macintosh computers. No additional software is required, simply plug in the device into your USB port and it is ready to use.

ADDITIONAL INFO

DETAILS	
Accessory range:	Light and control
Price range:	€0 - €50,00
ESD-Safe:	Yes
Dimensions:	10cm (W) x 7cm (L) x 3cm (H)
Weight:	300 g
Compatible with:	All USB models
Package contents:	1 foot pedal
Warranty:	1 year European warranty

BL-CDW



The Dino-Lite backlight stage BL-CDW allows two different types of lighting: brightfield and darkfield. In the brightfield mode, the light is transmitted from below the sample that shows up vividly showing the form and structure of the specimen on a bright background. With darkfield illumination, the transmitted light will not reach the microscope and will therefore not be part of the image.

The image will show bright objects on an almost black background. This type of light is not only suitable for prepared specimen but also for live specimen such as flagellum, the pseudopod movement, spirochete and more. Both types of illumination allow for high contrast, clear images and adds a whole new dimension to the Dino-Lite digital handheld microscopes with magnifications over 100x.

ADDITIONAL INFO

DETAILS	
Accessory range:	Light and control
Price range:	€250,00 - €350,00
ESD-Safe:	No
Dimensions:	5.1cm (H) x 5.43cm (D)
Weight:	178 g
Compatible with:	All Dino-Lite models, except long working distance models
Package contents:	BL-CDW, Power adapter
Warranty:	2 year European warranty

N3C-R



The N3C-R is a passive ring light solution that helps to reveal more details by generating shadow-less illumination. It is designed for use with the Dino-Lite AM4115/4515/4815/7115/7515/7915 USB models. The N3C-R cap, measuring 6,5 cm (2,5 inch) in diameter is a simple yet powerful solution to provide ring illumination for a digital microscope. The N3C-R utilizes the Dino-Lite's built-in LEDs by redirecting it to form a focused, diffused, and uniform illumination of the object. On polarized models, such as the AM4115ZT, AM4515ZT, AM4815ZT, AM7115MZT, AM7515MZT, AM7915MZT the polarizer can still be used to reduce the unwanted glare or reflection. It is not necessary to mount or power an external ring light, so no additional heat is produced and also no noticeable weight is added. This makes the N3C-R a very economical ring light solution, adding even more flexibility when using the Dino-Lite.

Note: The N3C-R works best at a working distance between 2-15 cm. It is not suitable for usage at a shorter working distance, and is not compatible with the high magnification models, such as AM4515T5/AM4515T8AM4115TF/AM7115MTF and the AM73115MTF.

ADDITIONAL INFO

DETAILS	
Accessory range:	Light and control
Price range:	€50,00 - €150,00
ESD-Safe:	No
Dimensions:	1.55cm (H) x 6.5cm (D)
Weight:	8 g
Compatible with:	AM4115/AM4515/AM4815 series and AM7115/AM7515/AM7915 series excluding AM4515T5 & -T8
Package contents:	N3C-R ring light cap
Warranty:	1 year European warranty

N3C-A



The N3C-A coaxial light cap is a useful accessory for the Dino-Lite Edge models from the Long Working Distance range. Especially difficult to inspect surfaces such as metal, plastics or glass benefit from this addition.

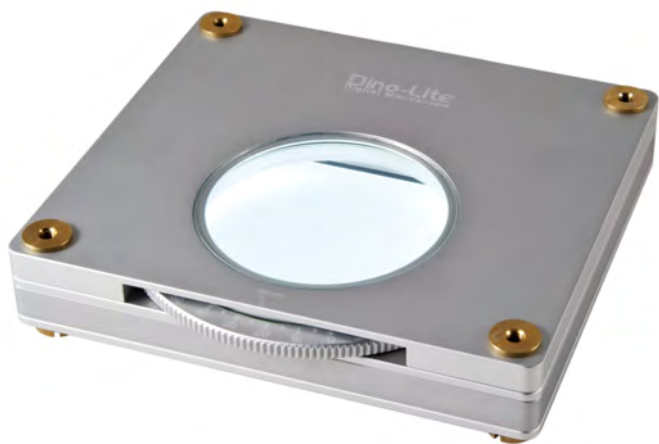
Inside the small and light front cap an ingenious mirroring system with a beam splitter has been integrated. The combination of coaxial lighting, a high sensitive camera and a magnification of up to 140 times makes it possible to visualize even the smallest scratches and dents on any surface. The coaxial lighting does also eliminate disturbing shadows making it easier to look inside small holes in the material you wish to check.

The NC3-A coaxial light cap is interchangeable with other caps from the Dino-Lite range. The optimum result can be achieved by using it in combination with a Dino-Lite Edge model from the Long Working Distance range (LWD).

ADDITIONAL INFO

DETAILS	
Accessory range:	Light and control
Price range:	€50,00 - €150,00
ESD-Safe:	No
Dimensions:	18.5mm (H) x 30.3mm (D)
Weight:	6 g
Compatible with:	All Edge models (AM41xx, AM45xx, AM48xx, AM71xx, AM75xx, AM78xx, AM79xx)
Package contents:	N3C-A coaxial light cap, Quick start guide
Warranty:	1 year European warranty

BL-ZW1



The BL-ZW1 backlight accessory opens up a whole new range of applications. The BL-ZW1 can be powered over USB or the DC adapter. The backlight has a built in, freely rotatable polarizer. The accessory is ideally suited to work with Dino-Lite models that have the polarization filter.

ADDITIONAL INFO

DETAILS	
Accessory range:	Light and control
Price range:	€150,00 - €250,00
ESD-Safe:	No
Dimensions:	10.1cm (L) x 9.5cm (W) x 1.9cm (H)
Weight:	330 g
Compatible with:	All models with polarizer
Package contents:	Backlight pack, USB cable, Power adapter
Warranty:	1 year European warranty

KM-01



The KM-01 can be used to control the Dino-Lite focus wheel without touching the device. This is especially useful when the Dino-Lite needs to be isolated during use.

The touch controls on the durable KM-01 control box provide instant response, but the KM-01 can also be controlled with the DinoCapture 2.0 software. The KM-01 can be mounted on the MS35B/MS36B/RK-10A Dino-Lite stands, or on 3rd party stands with a 10mm diameter pole.

The KM-01 is compatible with certain models of Dino-Lite. Please consult your local reseller or Dino-Lite Europe for further information.

ADDITIONAL INFO

DETAILS	
Accessory range:	Light and control
Price range:	€250,00 - €350,00
ESD-Safe:	No
Dimensions:	77.14mm (L) 65.55mm (W) 98mm (H)
Weight:	340 g (Motor) 110 g (Control Box)
Compatible with:	Please inquire with your local Dino-Lite sales representative for compatibility information
Package contents:	Motor, Control Box, C-Clip, Set Screws, AC Adapter, USB Cable, Male/Female 2 Pin Circular DIN Connector, Software CD
Warranty:	1 year European warranty

SL-ZW1



The SL-ZW1 is a polarized USB powered gooseneck light with the ability for the polarization to be adjusted by a simple rotation on the accessory itself. To take advantage of the polarizing light, the accessory is ideally suited to work with Dino-Lite models that have the polarization filter.

ADDITIONAL INFO

DETAILS	
Accessory range:	Light and control
Price range:	€0 - €50,00
ESD-Safe:	No
Dimensions:	40cm (L) x 1.6cm (D)
Weight:	56 g
Compatible with:	All models with polarizer
Package contents:	1 side light
Warranty:	1 year European warranty

Алматы (727)345-47-04
Ангарск (3955)60-70-56
Архангельск (8182)63-90-72
Астрахань (8512)99-46-04
Барнаул (3852)73-04-60
Белгород (4722)40-23-64
Благовещенск (4162)22-76-07
Брянск (4832)59-03-52
Владивосток (423)249-28-31
Владикавказ (8672)28-90-48
Владимир (4922)49-43-18
Волгоград (844)278-03-48
Вологда (8172)26-41-59
Воронеж (473)204-51-73
Екатеринбург (343)384-55-89

Иваново (4932)77-34-06
Ижевск (3412)26-03-58
Иркутск (395)279-98-46
Казань (843)206-01-48
Калининград (4012)72-03-81
Калуга (4842)92-23-67
Кемерово (3842)65-04-62
Киров (8332)68-02-04
Коломна (4966)23-41-49
Кострома (4942)77-07-48
Краснодар (861)203-40-90
Красноярск (391)204-63-61
Курск (4712)77-13-04
Курган (3522)50-90-47
Липецк (4742)52-20-81

Магнитогорск (3519)55-03-13
Москва (495)268-04-70
Мурманск (8152)59-64-93
Набережные Челны (8552)20-53-41
Нижний Новгород (831)429-08-12
Новокузнецк (3843)20-46-81
Ноябрьск (3496)41-32-12
Новосибирск (383)227-86-73
Омск (3812)21-46-40
Орел (4862)44-53-42
Оренбург (3532)37-68-04
Пенза (8412)22-31-16
Петрозаводск (8142)55-98-37
Псков (8112)59-10-37
Пермь (342)205-81-47

Ростов-на-Дону (863)308-18-15
Рязань (4912)46-61-64
Самара (846)206-03-16
Санкт-Петербург (812)309-46-40
Саратов (845)249-38-78
Севастополь (8692)22-31-93
Саранск (8342)22-96-24
Симферополь (3652)67-13-56
Смоленск (4812)29-41-54
Сочи (862)225-72-31
Ставрополь (8652)20-65-13
Сургут (3462)77-98-35
Сыктывкар (8212)25-95-17
Тамбов (4752)50-40-97
Тверь (4822)63-31-35

Тольятти (8482)63-91-07
Томск (3822)98-41-53
Тула (4872)33-79-87
Тюмень (3452)66-21-18
Ульяновск (8422)24-23-59
Улан-Удэ (3012)59-97-51
Уфа (347)229-48-12
Хабаровск (4212)92-98-04
Чебоксары (8352)28-53-07
Челябинск (351)202-03-61
Череповец (8202)49-02-64
Чита (3022)38-34-83
Якутск (4112)23-90-97
Ярославль (4852)69-52-93

Россия +7(495)268-04-70

Казахстан +7(727)345-47-04

Беларусь +(375)257-127-884

Узбекистан +998(71)205-18-59

Киргизия +996(312)96-26-47

По вопросам продаж и поддержки обращайтесь:

эл.почта: deg@nt-rt.ru || сайт: <https://dino-lite.nt-rt.ru/>